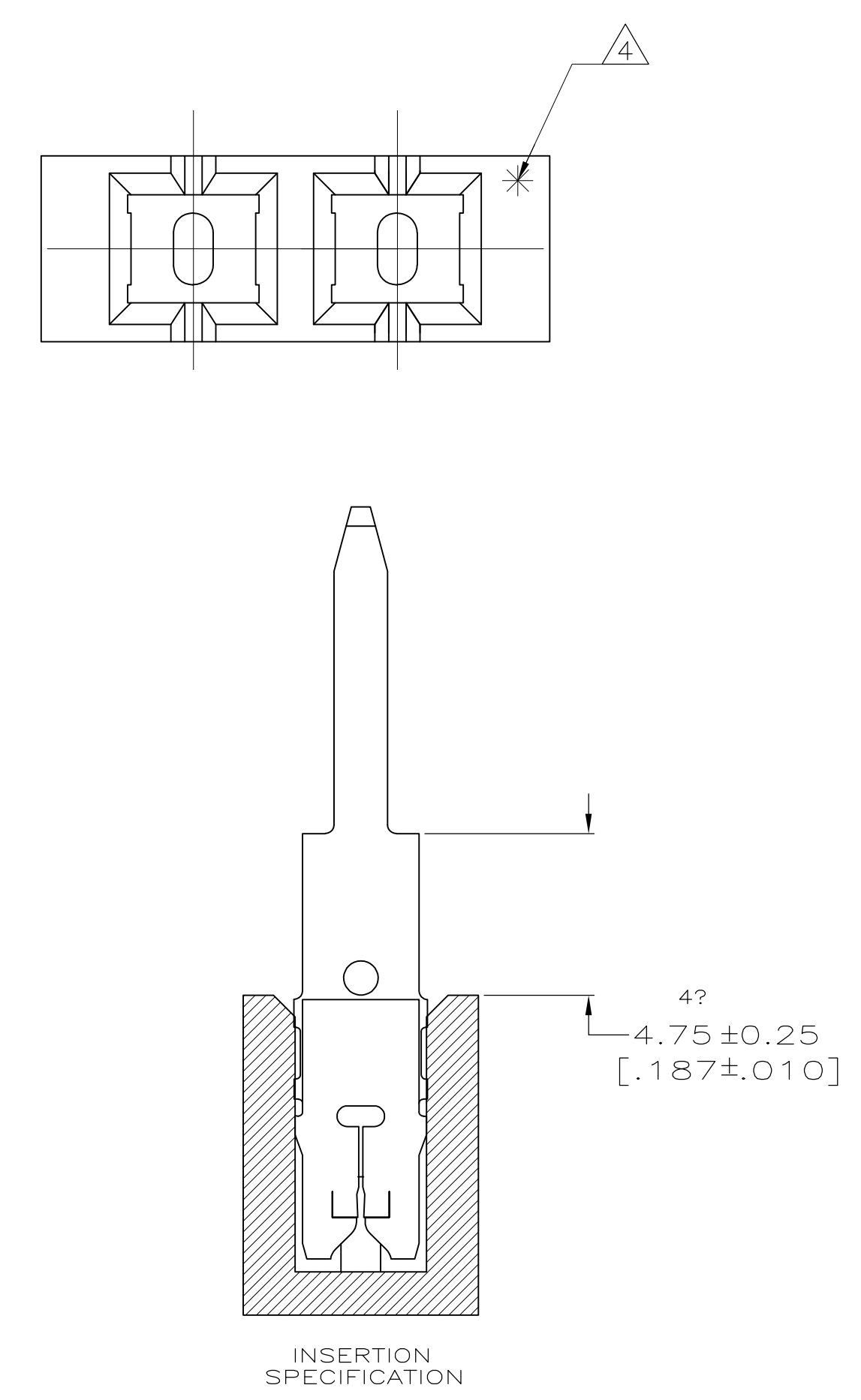
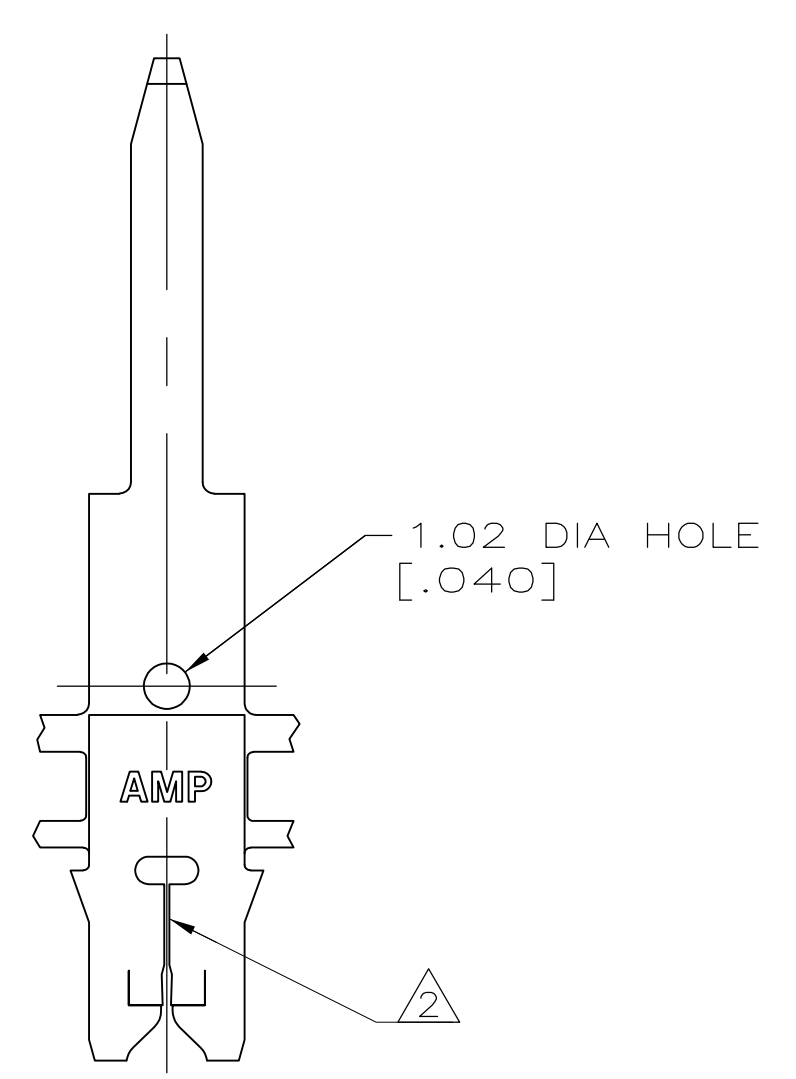
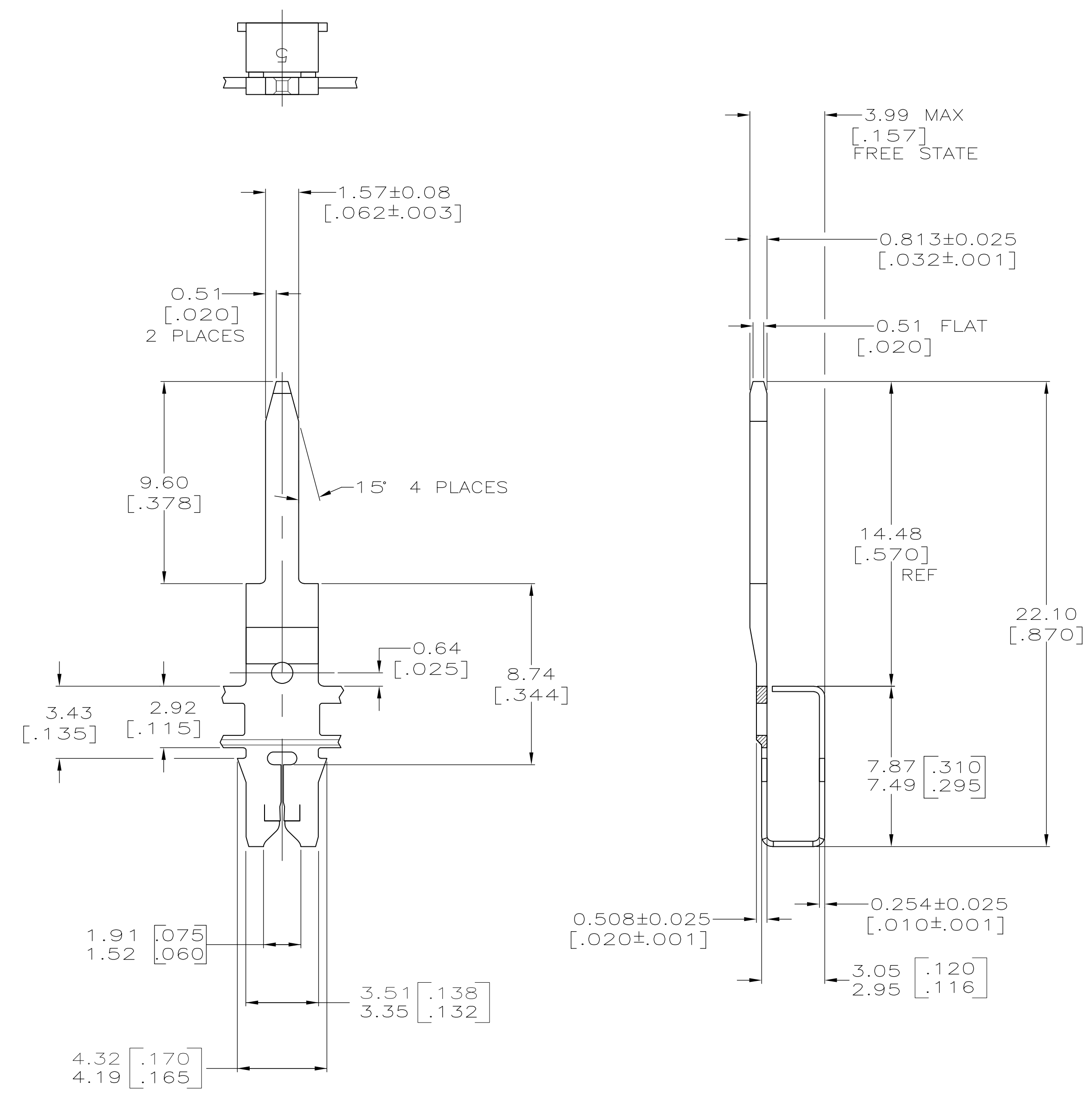


- CONTINUOUS STRIP ON REELS WITH TERMINALS LOCATED ON 6.00 ± 0.08 [$.236 \pm .003$] CENTERS.
- SLOT TERMINATES EITHER A SINGLE OR DOUBLE MAGNET WIRE OF THE SAME TYPE AND SIZE, COPPER 0.23mm [#31] AWG.
- AFTER INSERTION INTO PLASTIC HOLDER, TAB PORTION MUST BE BENT OVER 45° TO 90° OR POTTED-IN TO PREVENT PULL-OUT WHEN MATING RECEPTACLE IS DISCONNECTED.
- POINT OF MEASUREMENT LOCATED APPROXIMATELY AS SHOWN



63810-1
PART NO.

THIS DRAWING IS A CONTROLLED DOCUMENT.		DIN R. GRZYBOWSKI 2/JAN/95		TE Connectivity TAB, 1.57[.062], 300 SRS MAG-MATE	
DIMENSIONS: INCHES		CHK M.S.FEHER 2/JAN/95			
TOLERANCES UNLESS OTHERWISE SPECIFIED:		APVD N.E.NEFF 2/JAN/95		NAME	
0. PLC ± -		PRODUCT SPEC		108-2012	
1. PLC ± -		APPLICATION SPEC		114-2046	
2. PLC ± 0.15[.006]		SIZE		A1	
3. PLC ± -		CAGE CODE		00779	
4. PLC ± -		DRAWING NO		63810	
ANGLES ± -		RESTRICTED TO		-	
MATERIAL BRASS		FINISH TIN PLATED		CUSTOMER DRAWING	
		SCALE		6:1	
		SHEET		1 OF 1	
		REV		E1	